



OVERSEAS

Expanding Capabilities

Bus Body
Product Catalogue

Index

03	<ul style="list-style-type: none">• About The ALP Group• About ALP Overseas• About ALP Aeroflex
04	<ul style="list-style-type: none">• Certificates, Certifications and Associations
06	<ul style="list-style-type: none">• Bus Body Parts
08	<ul style="list-style-type: none">• Wind Shield Seal• Sliding Glass Run Channel EPDM and TPE• Whipper Pillar• Wheel Arch Rubber
09	<ul style="list-style-type: none">• JK/ Inswing Door Rubber• Boot/ Dicky Seal• Rub Rail• Side Window Rubber
10	<ul style="list-style-type: none">• Quarter Glass Seal/ Peep Window Seal• Arm Rests• Window Post Finisher• Roof Jointer
11	<ul style="list-style-type: none">• Berth Finisher (Horizontal & Vertical)• Engine Cabin Sound Insualtion• Air Conditioning Nitrile Rubber Duct Insulation• Thermo-acoustic Insulation• Underlay

About The ALP Group



TURNOVER
USD 200 million



Founded in 1985



11 companies spread
across the globe



Core expertise in R&D,
designing and producing
EPDM and rubber polymer
based innovative products



- Portfolio of over 10,000 products**
- **Global construction industry:** Weather Sealing, Thermal and Acoustic Insulation Solutions
 - **Global Automotive Sector:** An OEM & after-market supplier for Weather Sealing systems

About ALP Overseas

We are an established manufacturer and supplier of wide range of high-quality PVC, Rubber Extrusion and Moulded Products with an expertise in producing world class Sealing systems. ALP Overseas also supplies Building Profiles, Thermal and Acoustic Insulation products to the Domestic & Global Construction Industry. The ALP Group has been providing quality products to the various geographical locations of the world directly & through its subsidiaries in South Africa and Thailand for manufacturing and Joint Ventures in Melbourne, Barcelona and New York for sales and warehousing. The reason for the tremendous success of the ALP Overseas can be attributed to its state-of-the-art company infrastructure, machinery, a team of well-trained personnel and modern manufacturing facility.

The Manufacturing facility is constantly upgraded to help the company fulfil the demands successfully. For the purpose of managing the operations in a well-planned manner, the facility is segmented into various units, which are highly operational in nature.

Machine	Capacity (Per Month)
Moulding Presses	More than 50 tons
Extrusion Line	23 (Rubber-18, PVC/TPR-5)

Machine	Capacity (Per Month)	Capacity (Per Annum)
Extrusion Capacity	8 million mtr.	96 mtr.
Compounding	1400 metric tons	16,800 tons
Moulding Capacity	10.5 million shots	120 shots

About ALP Aeroflex

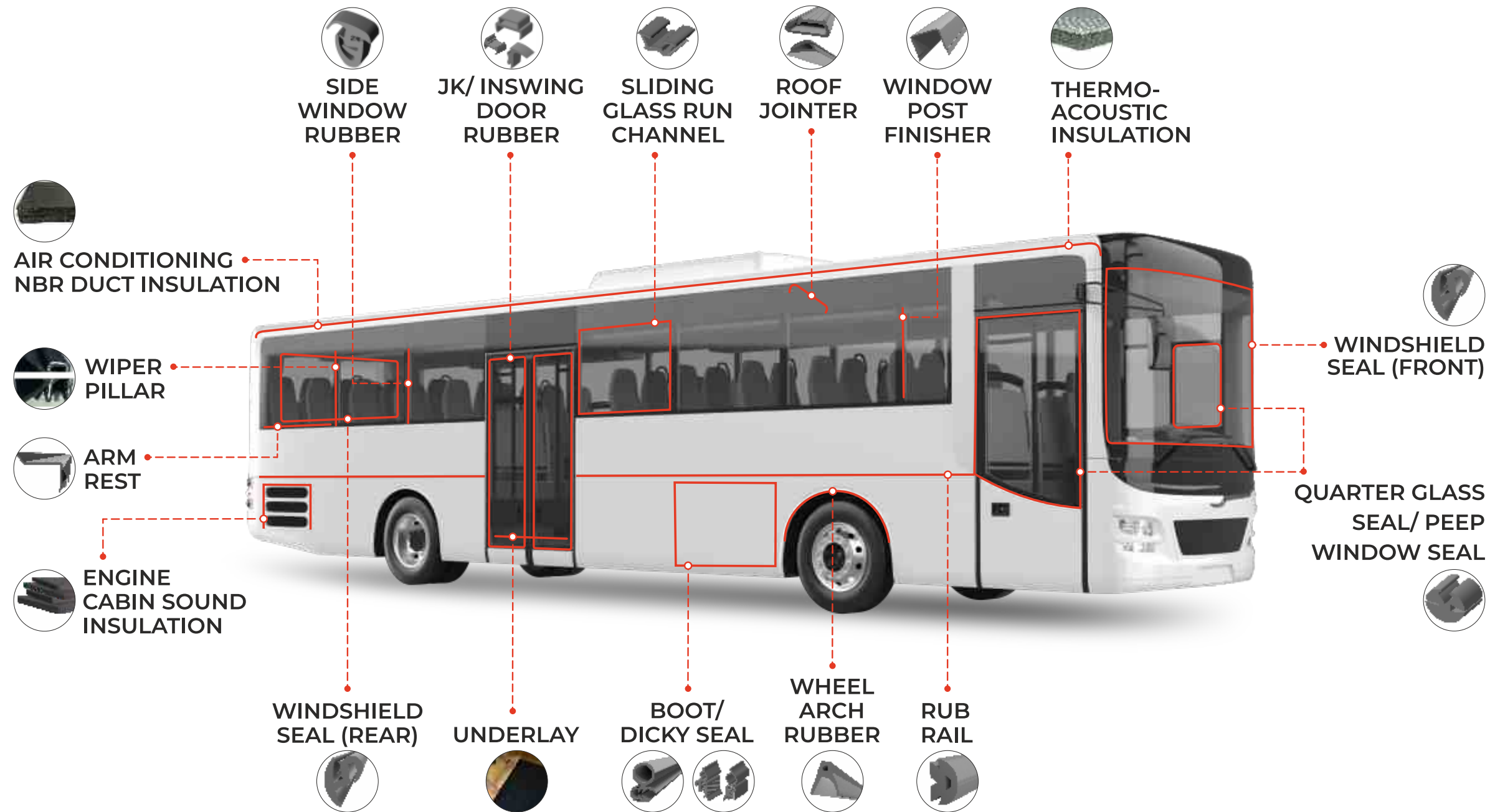
ALP Aeroflex India Pvt. Ltd., part of the \$ 160 Million ALP Group, is a joint venture of India-based ALP Overseas and Thailand-based Aeroflex, a part of Eastern Polymer Group that was established in 2011 for the manufacturing of Ethylene Propylene Diene Monomer (EPDM) insulation sheets, tubes and accessories for refrigeration and air-conditioning. With a vast network of strategically located warehouses and fabrication facilities, the company is uniquely positioned to service customer needs in a timely fashion with products that will meet their specific requirements. The corporate office is situated in the corporate hub of Gurgaon, Haryana, India and has its plant a Rudrapur in state of Uttarakhand.

With more than 20 years of experience ALP Aeroflex has become synonymous with quality and reliability, offering sustainable solutions that enhance comfort, save the environment and reduce energy to an absolute minimum.

Item & Material	Installed Capacity (Per Month)	Installed Capacity (Per Annum)
Nitrile/EPDM Sheet	200 tons	2400 tons
Nitrile/ EPDM Tube	10,000 boxes	1,20,000 boxes
Laminated Foil	60,000 mtr	7,20,000 mtr
Accosound	1000 blocks	12,000 blocks
Tapes Accessories	75,000 pcs	9,00,000 pcs
Sliting m/c	35,000 mtr	4,20,000 mtr

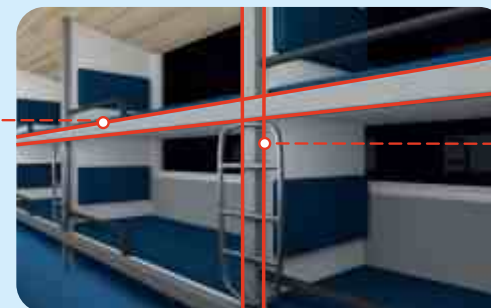
Certificates, Certifications & Associations





Special sections
for Sleeper Buses

**BERTH
FINISHER-
HORIZONTAL**



**BERTH
FINISHER-
VERTICAL**



Wind Shield Seal

EPDM Windshield seals are installed around the front glass to fix it with the body panel of Bus, Vehicle, Trucks and Heavy equipment. These seals ensure firm gripping in addition to sealing from water, air and dust leakage.

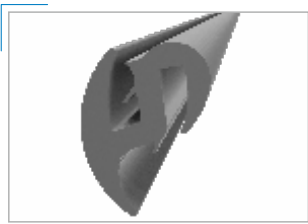
Available dimension: From 1/2" to 2 1/2"

Features

- RoHS Compliance
- REACH Compliance
- FMVSS 302-Flammability
- Excellent Ozone Resistance
- Excellent UV Resistance
- Resistance against heat.

Applications

Front or Back Glass sealing of vehicle.



Sliding Glass Run Channel EPDM and TPE

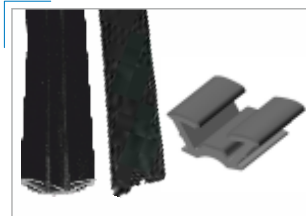
It is a long established fact that a reader will be distracted by the readable content of a page when looking at its layout. The point of using Lorem Ipsum is that it has a more-or-less normal distribution of letters.

Features

Good tear & abrasion resistance, High impact strength, Low specific gravity, Excellent resistance to chemicals & weathering, Resistance to Low & High Temperatures from -30 °C to +140° C

Applications

This is used for gripping and keeping the position and easy sliding of window glass.



Whiper Pillar

It is a long established fact that a reader will be distracted by the readable content of a page when looking at its layout. The point of using Lorem Ipsum is that it has a more-or-less normal distribution of letters.



Features

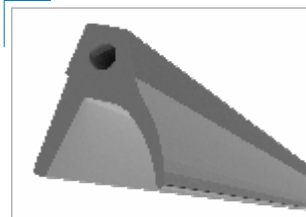
- PVC has good tensile strength
- Very high mechanical & physical properties
- High abrasion resistant

Applications

This is used for gripping and keeping the position and easy sliding of window glass.

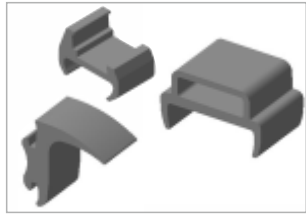
Wheel Arch Rubber

Wheel Arch prevents scraping of semi-circular vehicle part near the wheels & also prevents water from getting inside the panel avoiding the possibility of rusting. Wheel arch also provide excellent protection against corrosion.



JK/ Inswing Door Rubber

Weather-stripping is used extensively as a door sealing for automobiles. Door sealings are used to prevent Noise, air & water leakage. It also works as a good sound insulation & eliminates excess vibration caused when door gets closed hard.



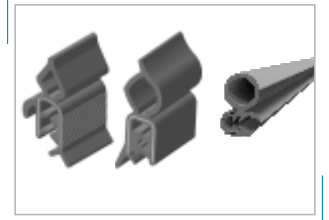
- RoHS Compliance
- REACH Compliance
- FMVSS 302-Flammability
- Excellent Ozone Resistance
- Excellent UV Resistance
- Resistance against acid and alkali.
- Resistance against heat.

Applications

Door sealing of vehicle.

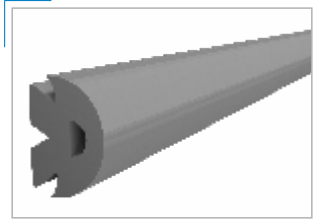
Boot/ Dicky Seal

Weather-stripping is used extensively as sealing for automobiles. It reduces engine noise transmission & protects the vehicle from outside elements & water leakage.



Rub Rail

Rub rail is installed on the outer body of the vehicle and is used to protect a Vehicle against rubbing and damages caused by gliding contact.



Side Window Rubber

It is a long established fact that a reader will be distracted by the readable content of a page when looking at its layout. The point of using Lorem Ipsum is that it has a more-or-less normal distribution of letters.



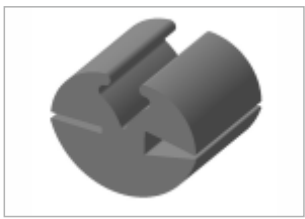
Features

- Colour - Bluish Tint, Violet Tint & Light Violet Tint
- Light in weight.
- Excellent UV resistance.
- RoHS Compliance

Quarter Glass Seal/ Peep Window Seal

EPDM Quarter Glass seal is installed around the glass or Aluminium window frame to fix it with the body panel of the Vehicle. These seals ensure firm gripping in addition to sealing from water, air and dust leakage.

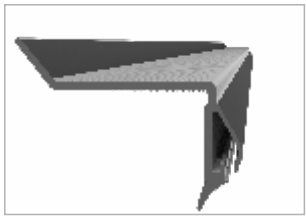
Available dimension: From 1/2" to 1"



Arm Rests

Glass Window side Arm Rest covers the lower Glass edges/ waist rail. This part is also used as an arm rest for passengers. Available in different colours, this part also enhances the interior aesthetics of the bus.

Additional Features:
(All PVC Parts)
Cost effective
ACP/Aluminium
Replacement



Features

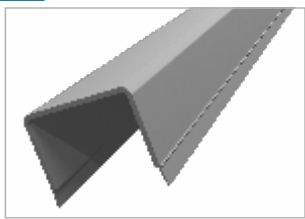
- Light weight
- Fire retardant
- Color Options - Grey, Black & White

Properties	Value Range	UOM	Standard Applied
Density	1.5 ± 0.05	g/cm^3	ASTM D 792
Hardness	80 ± 5	°Sh D	ASTM D 2240
Tensile Strength	>25	MPa	ASTM D 638
Elongation At Break	>20	%	ASTM D 638
Heat Deflection Temperature	>65	°C	ASTM D 628
Vicat Softening Point	>69	°C	ASTM D 1525
Impact Resistance	>15	kJ/m²	ASTM D 256

Window Post Finisher

Window Post Finishers are mainly used for covering the metal pillar post of bus body. Available in different colours, this part also enhances the interior aesthetics of the bus.

Additional Features:
(All PVC Parts)
Cost effective
ACP/Aluminium
Replacement



Features

- Light weight
- Fire retardant
- Color Options - Grey, Black & White

Properties	Value Range	UOM	Standard Applied
Density	1.5 ± 0.05	g/cm^3	ASTM D 792
Hardness	80 ± 5	°Sh D	ASTM D 2240
Tensile Strength	>25	MPa	ASTM D 638
Elongation At Break	>20	%	ASTM D 638
Heat Deflection Temperature	>65	°C	ASTM D 628
Vicat Softening Point	>69	°C	ASTM D 1525
Impact Resistance	>15	kJ/m²	ASTM D 256

Roof Jointer

It is a long established fact that a reader will be distracted by the readable content of a page when looking at its layout. The point of using Lorem Ipsum is that it has a more-or-less normal distribution of letters.



Features

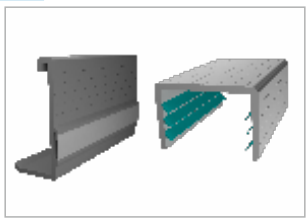
High heat resistance act as replacement of aluminium. Available in different colour to suit bus interiors. Good resistance to weathering

Applications

Bus Roof joint cover, It helps to improve the aesthetic appearance of bus roof.

Berth Finisher Horizontal & Vertical

It is a long established fact that a reader will be distracted by the readable content of a page when looking at its layout. The point of using Lorem Ipsum is that it has a more-or-less normal distribution of letters.



Features

- Flame retardant
- Light Weight
- Various Colour Available

Air Conditioning Nitrile Rubber Duct Insulation

Aeroflex is a closed cell flexible elastomeric foam made from EPDM rubber. This material has low thermal conductivity and high water vapour diffusion resistance. It is CFC/ HCFC free and dust and fiber free.

It ensures energy saving in eco friendly manner. This product meets insulation requirement in diverse fields such as the automobile, air conditioning & refrigeration industry, construction industry, pharma industry, hotels/ hospital and cold storage industry.



Engine Cabin Sound Insualtion

ALP Accosound is a blended elastomeric nitrile rubber acoustic absorber having open cell structure with complex pore geometry for effective absorption of air-borne sound across a broad range of frequencies.



The high density provides an effective barrier to sound transmission. The elastic properties helps to dampen the structure-borne noise transmission.

(EPA approved anti-microbial agent)

Thermo-acoustic Insulation

It is a long established fact that a reader will be distracted by the readable content of a page when looking at its layout. The point of using Lorem Ipsum is that it has a more-or-less normal distribution of letters.



Underlay

It is a long established fact that a reader will be distracted by the readable content of a page when looking at its layout. The point of using Lorem Ipsum is that it has a more-or-less normal distribution of letters.



Applications

- Effective Sound Absorbent in Building, Hotel Etc.
- Shock Absorbent From Vibration.



Growth Partners

 A VOLVO GROUP AND EICHER MOTORS JOINT VENTURE		
		 Our milestones are touchstones
		
		
		
		
		
		



Corporate Office: Plot No. 32, Sector-18 HUDA, Gurgaon, Haryana - 122015 (INDIA)

Website: www.alpoverseas.com; www.alpaeroflex.com

Email: marketing@alpoverseas.com; marketing@alpaeroflex.com

Telephone: +91-124-4731500



Plant: Bilaspur Road, Rudrapur, Distt. Udham Singh Nagar, Uttarakhand - 243153

Telephone: +91-5944-247869, 247870